



# amaran 200d S Data Sheet

## Main Features

- **Ultra-High Color Quality** 200W Output Daylight BOWENS Mount Point-Source LED
- **Upgraded High SSI LEDs: SSI (D56): 87+** — Significantly Improved Spectral Continuity and Light Quality
- **Increased CRI, TLCI, TM-30 and SSI scores** for Super Accurate Color Rendering
- CRI: **96+**, TLCI: **99+**, TM-30 Rf: **95**, TM-30 Rg: **103**
- **Up to 55,800 lux @ 1 meter** with Hyper Reflector
- **Universal BOWENS Accessory Mount**
- Daylight CCT: **5600K**
- **Sidus Link** App Control
- **Stepless Dimming** from **0-100%**
- Built-in **Umbrella Holder**
- Integrated **Silent Cooling** System
- **Compact & Lightweight** Lamp Head
- **Easy to Operate** Minimalist **User Interface**
- Click Control Knob to **Toggle Through Intensity Presets**
- **8 Built-in Lighting FX:** Paparazzi, Fireworks, Lightning, Faulty Bulb, TV, Pulsing, Strobe, & Explosion
- **48V DC Power Input:** AC & Battery Power Options
- **3m Long Power Supply Cable**

## Target Audience

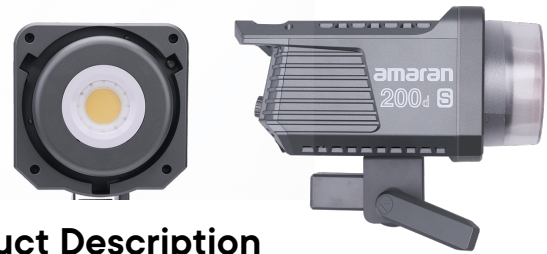
With its ultra-high color quality, all-in-one build for convenient operation, and versatile power options, the amaran 200d S is perfect for videographers, indie filmmakers, creators, and photographers who want a lightweight fixture without sacrificing exceptional spectral and image quality.

For creators lighting home studios or livestream setups, the significantly improved spectral quality of the 200d S will ensure accurate skin tone reproduction with industry-leading color quality. At 200W of output, it also has the power to easily fill the room with high quality light, while still being easy to manage and stow away when not in use.

Its universal BOWENS Mount can be paired with a variety of modifiers, such as the included BOWENS Mount Hyper Reflector, making it a fantastic multi-tool for soft or intense lighting for filmmakers and photographers alike. And its silent cooling system will never interfere with any scenario, whether creating content at home or on-the-move.

For maximum convenience and efficiency, on location or in the studio, users can wirelessly control the 200d S with the Sidus Link mobile app. Finetune your lighting settings, activate Lighting FX, or control multiple lights in a scene to enhance any lighting design.

The compact versatility of the 200d S makes it an essential addition to any filmmaker, creator, or photographer's lighting arsenal.



## Product Description

The amaran 200d S is a 200W daylight BOWENS Mount point-source light with integrated controls, versatile power options, and an upgraded LED chipset for increased color quality and spectral reproduction.

Featuring an all-new dual-blue LED chipset design, the 200d S has improved spectral continuity to achieve stunning spectral reproduction of an ultra-high SSI (D56) of 87, a 17.5% increase in SSI from its predecessor. The 200d S also features super accurate color rendering, with increased CRI [96], TLCI [99], TM-30 RF [95], and TM-30 RG [103] values.

Equipped with a universal BOWENS Mount, the 200d S is compatible with the largest selection of modifiers on the market, including the Light Dome SE, Light Dome Mini II, and Aputure Lantern, making it an incredibly versatile multi-tool. For additional versatility, the 200d S features an umbrella mount integrated into the lamp head.

Matching the all-in-one build of its predecessor, the 200d S contains a powerhouse LED that can output 55,800+ lux at 1 meter when paired with the Hyper Reflector. Its simple and compact form factor houses an intuitive LCD screen and control knob interface that seamlessly blends into the body of the fixture, with the ability to adjust the light in 1% increments and toggle through intensity presets with ease.

Using its integrated Sidus Mesh technology, the 200d S can be controlled wirelessly via the Sidus Link app, granting it access to 8 lighting effects, including Paparazzi, Fireworks, Lightning, Faulty Bulb, TV, Pulse, Strobe, and Explosion.

In addition to the included AC Power Supply, its 48V DC power input grants the 200d S with the flexibility of battery power using two Gold or V-Mount batteries with the Aputure 2-Bay Battery Power Station\*, providing versatile power options for seamless workflows across all shooting environments.

\* Aputure 2-Bay Battery Power Station Sold Separately

## amaran 200d S Photometrics

CCT	Dis.	No Reflector	Hyper Reflector
5,600K	0.5m	30,700 lux	258,400 lux
		2,852 fc	24,006 fc
	1m	7,890 lux	55,800 lux
		733 fc	5,184 fc
	3m	945 lux	5,730 lux
		88 fc	532 fc
5m	364 lux	2,021 lux	
	34 fc	188 fc	

# amaran

## What's in the Box

Name	Qty
amaran 200d S	1
Bowens Mount Protection Cover	1
Bowens Mount Hyper Reflector	1
AC Power Supply	1
AC Power Cable	1



## amaran 200d S Specifications

<b>CCT</b>		5,600K
<b>CRI</b>		96+
<b>TLCI</b>		99+
<b>CQS</b>		95+
<b>SSI (D56)</b>		87+
<b>TM-30 RF (Average)</b>		95
<b>TM-30 RG (Average)</b>		103
<b>Max Power Consumption</b>		221W
<b>Max Power Output</b>		200W
<b>Lumens</b>		20,000lm
<b>Beam Angle</b>	<b>No Reflector</b>	110.0°
	<b>Hyper Reflector</b>	25.9°
<b>Operating Voltage</b>	<b>DC Power Supply</b>	48V / 5.2A
	<b>AC Power Supply</b>	100V ~ 240V / 2.5A ~ 5.0A
<b>Operating Temperature</b>		-10°C ~ 40°C / 14°F ~ 104°F
<b>Storage Temperature</b>		-20°C ~ 80°C / -4°F ~ 176°F
<b>Control Methods</b>		On-board, Sidus Link App
<b>Firmware Upgradeable</b>		Sidus Link
<b>Wireless Operating Range (Bluetooth)</b>		≤100m / ≤328.1ft
<b>Screen Type</b>		LCD
<b>Cooling Method</b>		Active Cooling
<b>Dimensions</b>	<b>Lamp Head w/o Mounting Bracket</b>	207 x 115 x 115cm 81.5 x 45.3 x 45.3in
	<b>Lamp Head w/ Mounting Bracket</b>	207 x 119 x 200cm 81.5 x 46.9 x 78.7in
	<b>Power Supply</b>	170 x 84 x 31mm 6.69 x 3.31 x 1.22in
	<b>Power Cable</b>	300cm / 118.11in
<b>Weight</b>	<b>Lamp Head</b>	1.56kg / 3.44lbs
	<b>Power Supply</b>	790g / 1.74lbs
	<b>Total with Case</b>	3.71kg / 8.18lbs

## Sales & Shipping Information

<b>Product Name</b>		amaran 200d S
<b>SKU</b>	<b>UK Plug</b>	APM022DA11
	<b>EU Plug</b>	APM022DA13
<b>EAN</b>	<b>UK Plug</b>	6971842185849
	<b>EU Plug</b>	6971842185863
<b>Packing Dimensions</b>		38.3 x 27.4 x 24.3cm 15.08 x 10.79 x 9.57in
<b>Net Weight</b>		2.835kg / 6.25lbs
<b>Gross Weight</b>		3.71kg / 8.18lbs
<b>Carton Quantity</b>		1 pc
<b>Carton Dimensions</b>		40.2 x 29 x 26.2cm 15.83 x 11.42 x 10.31in
<b>Carton Weight</b>		4.24kg / 9.35lbs